

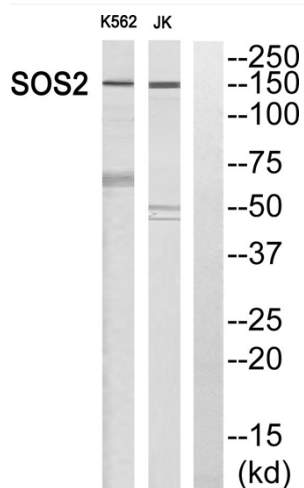


Sos 2 Polyclonal Antibody

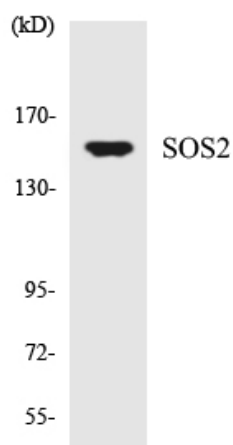
| | |
|----------------------------------|--|
| Catalog No | YP-Ab-16252 |
| Isotype | IgG |
| Reactivity | Human;Rat;Mouse; |
| Applications | WB;ELISA;IHC |
| Gene Name | SOS2 |
| Protein Name | Son of sevenless homolog 2 |
| Immunogen | The antiserum was produced against synthesized peptide derived from human SOS2. AA range:631-680 |
| Specificity | Sos 2 Polyclonal Antibody detects endogenous levels of Sos 2 protein. |
| Formulation | Liquid in PBS containing 50% glycerol, 0.5% BSA and 0.02% sodium azide. |
| Source | Polyclonal, Rabbit,IgG |
| Purification | The antibody was affinity-purified from rabbit antiserum by affinity-chromatography using epitope-specific immunogen. |
| Dilution | WB 1:500-2000;IHC-p 1:50-300; ELISA 2000-20000 |
| Concentration | 1 mg/ml |
| Purity | ≥90% |
| Storage Stability | -20°C/1 year |
| Synonyms | SOS2; Son of sevenless homolog 2; SOS-2 |
| Observed Band | 150kD |
| Cell Pathway | intracellular,cytosol, |
| Tissue Specificity | Brain,Placenta, |
| Function | function:Promotes the exchange of Ras-bound GDP by GTP.,online information:Son of sevenless entry,similarity:Contains 1 DH (DBL-homology) domain.,similarity:Contains 1 N-terminal Ras-GEF domain.,similarity:Contains 1 PH domain.,similarity:Contains 1 Ras-GEF domain., |
| Background | This gene encodes a regulatory protein that is involved in the positive regulation of ras proteins. Mutations in this gene are associated with Noonan Syndrome-9. [provided by RefSeq, Jul 2016], |
| matters needing attention | Avoid repeated freezing and thawing! |
| Usage suggestions | This product can be used in immunological reaction related experiments. For more information, please consult technical personnel. |



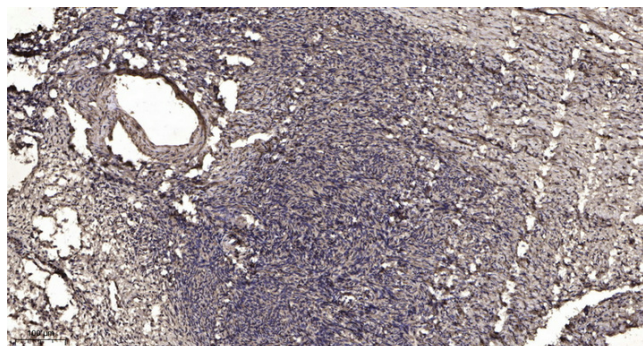
Products Images



Western blot analysis of SOS2 Antibody. The lane on the right is blocked with the SOS2 peptide.



Western blot analysis of the lysates from HT-29 cells using SOS2 antibody.



Immunohistochemical analysis of paraffin-embedded human oophoroma. 1, Antibody was diluted at 1:200(4° overnight). 2, Tris-EDTA,pH9.0 was used for antigen retrieval. 3,Secondary antibody was diluted at 1:200(room temperature, 45min).